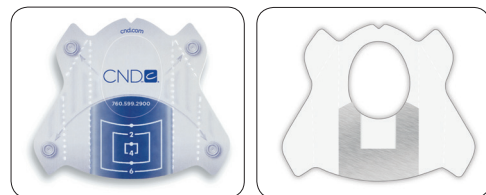


PERFORMANCE FORM™ Application



10 MIN

High-performance sculpting forms in silver for Liquid & Powder Enhancements or clear for Gel Enhancements. For natural-looking nail enhancements with a deep C-curve and no seepage.

STEP 1:

Prepare the Form

1. For wide or flat nails, pre-fold the vertical perforation on each side to help shape the form.



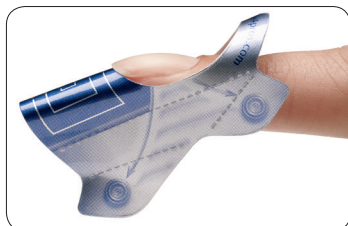
For small nails or dramatic C-curve, this is not necessary.

2. To determine the proper fit, place the form under the extension edge up to the free edge line. Use curved cuticle scissors to pre-tailor the form, ensuring it fits snugly against the free edge line. This will help prevent product “seepage” under the natural nail extension edge during sculpting.

STEP 2:

Fit Form to Finger

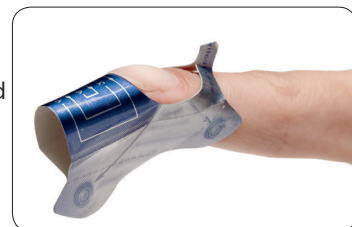
1. Place the form under the extension edge at a 45° angle and gently rock up and under the natural nail extension edge.



STEP 3:

Secure Form to Finger

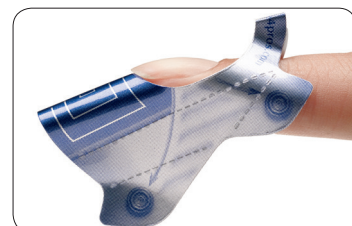
1. Squeeze the front tabs together and press tabs up toward the nail to create a perfect C-curve.



STEP 4:

Secure C-curve on Form

Squeeze the rear tabs to secure the form. The rear V notch may be pinched together to accommodate small fingers, or opened for large fingers.



PRODUCTS REQUIRED

PERFORMANCE FORMS™ Silver
PERFORMANCE FORMS™ Clear*

ACCESSORIES/EQUIPMENT REQUIRED

Curved cuticle scissors*

* Optional