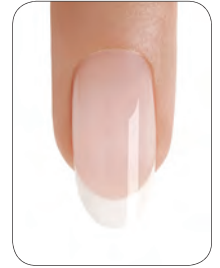


BRISA™ Gel Enhancements Sculpted on a Tip



90 MIN

A service designed for problem nails with no natural-nail extension edge, requiring length and re-design.

STEP 1:

P.R.E.P.

1. P - Perform a manicure.

- a. Have the client wash their hands with soap and water and towel dry.



- b. Massage **COOLBLUE™** Hand Cleanser into the client's hands to cleanse skin.

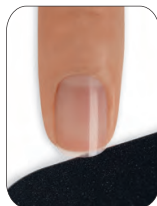


- c. Remove any existing nail color from the natural nail using an acetone-based polish remover (**OFFLY FAST™** Moisturizing Remover or **SCRUBFRESH™** Nail Surface Cleanser) and a plastic-backed lint-free pad.



- d. If necessary, trim the length from each nail, using nail clippers.

- e. Shape the extension edge of each nail with the **240-grit side of a Kanga™ File** or **Koala Buffer™**.



- f. Apply a small amount of **CuticleAway™** Professional Cuticle Remover evenly around the cuticle of each nail.*

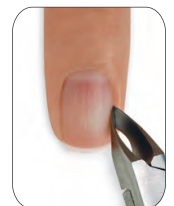


- g. Gently slide a **cuticle pusher** along the nail plate toward the cuticle area and along the lateral folds to lift and loosen any non-living tissue from the nail plate. Remove any excess **CuticleAway™** from the nail and use a **curette** to remove non-living tissue up to the eponychium and lateral folds.



- h. **Scrub** nails thoroughly with soap and a damp brush, then rinse with warm water to remove the cuticle remover and soap; towel dry.*

- i. Use a **manicure nipper** to carefully remove any loosened, non-living tissue, as well as any loose pieces of skin or hangnails. Use a gentle touch during cuticle removal to protect the seals. Never cut living tissue as it can lead to infection.



* Dry P.R.E.P. is an excellent option for clients with great natural nails, who do not build excessive cuticle between services. Eliminating the wet cuticle treatment can shorten the service time and increase adhesion for some clients.

2. **R - Remove** shine from the natural nail surface with the **240-grit side of the Koala Buffer™** in the direction of nail growth.



NOTE: When applying a tip, Eliminate and Purify nail plate layers using SCRUBFRESH™ AFTER tip application.

STEP 2:

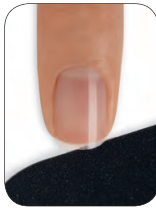
Apply a Clear Tip

1. Fit The Tip

- a. **Match** - The correct tip to the C-curve of the natural nail.



- b. **Fit** - The tip should fit easily from lateral wall to lateral wall of the natural nail and should encase the natural nail extension edge exactly. Use a **Kanga™ File** to shape and refine the natural nail to fit the tip perfectly into the stop point of the contact area. Do use **SCRUBFRESH™** on the nail until after tip application.



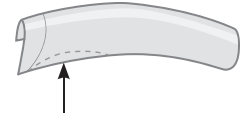
2. Pre-Tailor The Tip

- a. **Contact Area** - The contact area of the tip should cover no more than 1/3 of the natural nail before application. This will facilitate fast, efficient application and blending as well as optimum contact of the gel to the natural nail.



To reduce the contact area, gently file away unwanted material using a **180-grit file**. File contact area at a 45° angle to gradually form a "C" shape similar to the stop point. Bevel and taper to a thin edge. You may also choose to use a one-step tip cutter or curved cuticle scissors to cut the contact area away.

- b. **Lateral Wall** - If there is any overhang along the lateral wall of the tip (and you feel you can't use a smaller size, or if the nail is bitten and has excess skin on the sidewalls) use a file or sharp, curved cuticle scissors and carve out an arch to allow the tip to fit snugly along the sidewall, making sure the tip does not press into the skin. Work only on the area of overhang; do not remove other areas of the sidewall. Isolate the problem area, and alter only in that area. Buff the tip to bevel and smooth all edges. This will reduce the amount of blending once the tip is adhered.



3. Apply The Tip

- a. **Place a bead of adhesive** in the contact area of the tip and distribute evenly, being particularly careful to coat the corners. Place a small line of adhesive on the natural nail plate extension edge. Hold the tip between the thumb and forefinger when applying adhesive.
- b. **Spread the adhesive** gently with the tip to completely coat the entire extension edge. Use one or two quick wiping strokes to do this. Be particularly careful to coat the corners of the natural nail and the sidewall of the contact area with adhesive.
- c. **Secure** the tip by holding it at a 45° angle and gently butt the stop point against the natural nail extension edge. Slowly lower the contact area down to the natural nail, stopping when the desired side arch is achieved, while pressing all bubbles out.
- d. **Press firmly** against the extension edge for 10 seconds, securing the stop point to the natural nail.
- e. **Remove** any residual adhesive with a lint-free, plastic-backed pad.



4. Cut The Tip

- a. Use a “one-cut” tip cutter or wide-blade curved cuticle scissors or clippers to cut the tip to desired length and shape.

5. Shape And Blend The Tip

- a. **Shape** the extension edge of the tip with a **180-grit file, Hot Shot™ File** or **Blizzard™ File**, to create the desired shape.



- b. **Thin** the entire tip evenly using a **180-grit file**, paying close attention to the corners of the tip.



- c. **Refine** Zone 1 and thin to a sharp edge by beveling from the center of the tip toward the extension edge using a one-directional stroke.



- d. **Refine** and bevel sidewalls using a **180-grit file**. Bevel evenly down each side of the nail, working from the center of the tip down towards the sidewalls to prevent a wide look in Zone 2.



- e. **Refine** Zone 2 using a **180-grit file**. Thin the contact area of the tip and gently blend the remaining tip material from the nail using the **240-grit side of the Koala Buffer™**, to prevent ghost shadowing and pocket lifting. Be sure the tip is thin, blended and translucent.



- f. **Remove** any excess dust with a disinfectable dust brush.



STEP 3:

P.R.E.P.

1. **E - Eliminate** surface contaminants and **P - Purify** nail plate layers.

- a. Avoiding contact with the tip, thoroughly cleanse and temporarily dehydrate the nail plate layers with **SCRUBFRESH™** using a lint-free, plastic-backed pad. Gently pull lateral folds back and scrub thoroughly to be sure all areas of the nail are completely clean.



STEP 4:

Apply BRISA™ Bond

1. **Apply** one thin layer of **BRISA™ Bond** to the natural **nail plate** of 2-3 nails at a time ensuring that the brush has enough liquid to thoroughly and evenly cover each nail. Repeat this step until all nails are thoroughly and evenly coated.



Remember: When applying **BRISA™ Bond**, do not touch the skin or allow the product to flood the cuticle area.

2. Apply to five nails and cure each hand for **10 seconds** (**preset button 1**) in the **CND™ LED Lamp**. Do not remove the top film after removing the nails from the lamp.



STEP 5:

Create a Base Layer (optional)

This step will ensure proper adhesion and can prevent service breakdown. Implement when needed.

1. Apply a thin to medium layer of **BRISA™ Clear or Pure Pink - Sheer Sculpting Gel** to the natural nail.



2. Apply to **five nails** and cure each hand for **one minute (preset button 2B)** in the **CND™ LED Lamp**.* Do not remove the top film after removing the nails from the lamp.



STEP 6:

Zone 1 - Smile Lines

1. Use a string of gel to define the shape of what will become the smile line using **BRISA™ Pure White or Soft White Sculpting Gel**. Pick up a scoop of gel and allow a “string” to form while removing the bead from the pot. Touch the tip of the “string” to the start of the desired sidewall smile line placement on one side of the nail, and draw in the smile line with a draping motion.
2. **Touch** the brush gently to the opposite side of the sidewall to complete the line. This will “draw” in a guide for the smile line and help create consistency from nail to nail.
3. Once the smile line is established **fill in** the extension edge with the remaining gel on the brush.



4. Apply to **five nails** and cure each hand for **one minute (preset button 2B)** in the **CND™ LED Lamp**.* Do not remove the top film after removing the nails from the lamp.



STEP 7:

Zones 2 & 3 - Apex, Upper Arch and Cuticle Area

1. **Build and shape** the enhancement by placing a scoop of gel onto the center of the nail in Zone 2.
2. **Guide** the product from side to side, rotating the brush at a 45° angle, and tapering toward the sidewalls - while keeping the bulk of the gel in the vertical center of the nail.
3. **Gently ease** the gel back toward the cuticle area lightening the touch in the middle of the nail.
4. **Lightly feather** the gel up to the established smile line.
5. Apply to **five nails** and cure each hand for **one minute (preset button 2B)** in the **CND™ LED Lamp**.* Do not remove the top film after removing the nails from the lamp.



STEP 8:

Perfect the Shape (optional)

This step will reinforce the enhancement and can prevent service breakdown. Implement when needed.

1. Apply a thin layer of **BRISA™ Clear Sculpting Gel** over the entire nail to perfect the shape.



*If using the **CND™ UV Lamp**, cure for two minutes.

2. **Fill in** low spots by taking a tiny scoop onto your brush. Touch the product to one side of the low spot and lift up to create a thin strand of product. Pull this strand of gel across the nail and touch to the other side. Lift off, and allow the gel to self-level, filling in the low spot.

3. Apply to **five nails** and **cure** each hand for **one minute** (**preset button 2B**) in the **CND™ LED Lamp**.*



STEP 9:

Shape and Define

For a comprehensive tutorial of CND finishing techniques see the Enhancement Finishing Step-by-Step.

1. Remove the top film with **99% Isopropyl Alcohol** and a plastic-backed pad.
2. Finish the nail using a **Blizzard™ File** to define and shape.
3. Smooth the surface with a **Boomerang Padded File**, making sure to remove all shine.
4. **Remove** any dust with a disinfectable brush and a plastic-backed pad saturated with **99% Isopropyl Alcohol**.



STEP 10:

Apply BRISA™ Gloss

1. Apply a thin layer of **BRISA™ Gloss** using the **CND 5 Point Polish Method** to the **extension edge** and **nail surface** of all five nails on one hand. (For more detailed information see the CND 5 Point Polish Method Step-by-Step.).
2. Apply to **five nails** and **cure** each hand for **one minute** (**preset button 3**) in the **CND™ LED Lamp**.*



3. Remove the top film with **99% Isopropyl Alcohol** and a plastic-backed pad.
4. Massage **SOLAROIL™ Nail & Cuticle Care** into the nails and skin.



PRODUCTS REQUIRED

COOLBLUE™ Hand Cleanser
OFFLY FAST™ Moisturizing Remover
CuticleAway™ Professional Cuticle Remover
SCRUBFRESH™ Nail Surface Cleanser
CND™ Files and Buffers
CND™ Clear Tips
CND™ ProSeries Gel Flat Oval Brush #6
BRISA™ Bond
BRISA™ Sculpting Gels
BRISA™ Gloss
SOLAROIL™ Nail & Cuticle Care

ACCESSORIES/EQUIPMENT REQUIRED

CND™ LED Lamp
 Hand towels
 Hand soap
 Plastic-backed, lint-free pads
 Disinfectable dust brush*
 99% Isopropyl Alcohol
 Cuticle pusher
 Manicure nippers
 Nail clippers
 Curette
 Tip cutter*
 Curved cuticle scissors

*Optional

**If using the CND™ UV Lamp, cure for two minutes.*