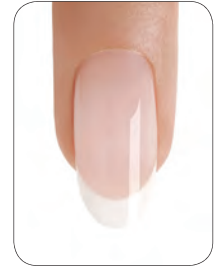


BRISA™ Gel Enhancements Rebalancing



1 HOUR Rebalancing is a method of maintaining the balance and beauty of the enhancement while the natural nail grows. Proper rebalancing of the nail enhancement protects the health of the natural nail and maintains the longevity of the service.

STEP 1:

Cleanse Hands

1. Have the client wash their hands with soap and water and towel dry.
2. Massage **COOLBLUE™** Hand Cleanser into the client's hands to cleanse skin.



STEP 2:

Assess for a Rebalance

1. Remove any existing nail color from the natural nail using an acetone-based polish remover (**OFFLY FAST™** Moisturizing Remover or **SCRUBFRESH™** Nail Surface Cleanser) and a plastic-backed lint-free pad.



2. Assess each nail for potential problems.

a. There are **three types** of rebalance:

- **Problem-free rebalance**
When using a single-color gel, if the nail comes back problem free, re-establish the original length and reduce the product to a thin layer and apply product to re-engineer the enhancement's structural integrity
- **Forever French rebalance**
Forever French enhancements that come back problem free need to be thinned out by 50% in all three Zones. Then apply product to re-establish the smile line and re-engineer the original structural design
- **Diagnostic rebalance**
This process includes thinning and beveling each Zone where problems exist, then replacing the product to prevent future breakdown. The goal here is to fix the problem and then reassess a long-term solution

STEP 3:

Prep for Rebalance

File prep each Zone for correction and prevention of future problems. **Avoid nipping** or mechanical force – sliding the nipper under a lifted edge and pulling up can lead to service breakdown. It can also pull up layers of the nail plate, which will weaken the foundation of the enhancement. Nipping can also lead to onycholysis, and perpetuate excessive filing to remove the ridge left behind.

1. Zone 1 – File Prep

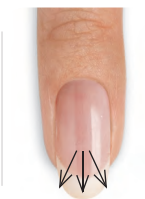
- Re-establish the original length of the extension edge with a **180-grit file**.

- Use a **180-grit file** to thin out the entire Zone 1. If the natural nail is separating from the product, file around the area of lift, until the loosened material flakes away from the natural nail without causing damage. Blend the lifted area until a new seal is found between the product and nail.



- Keep the **file parallel** to the nail and work in rounded motions to evenly thin out the coating.

- Bevel** to expose a small margin of keratin all the way around the extension edge and around lateral walls to reseal during product reapplication. This will help prevent the natural nail from pulling away from the overlay.



Bevel Down From Center To Tip Until Lift Is Removed

2. Zone 2 – File Prep

- Thin out** the entire Zone 2 and taper the lateral walls.



- Prep all cracks** for repair by thinning the area around the crack. Thin all the way to the root of the crack (which is usually down to the natural nail plate). If the crack is small, file off product in the shape of a “V” to expose the crack in the natural nail.
- Thin** any area of “pocket lift” until the separated product flakes away and a new seal is found.
- Thin and taper** lateral walls until flush to the natural nail.
- Blend** Zone 2 into Zone 1.

3. Zone 3 – File Prep

- Thin** the entire Zone 3 and blend to Zone 2.



- Thin** areas of lift until the separated product flakes away from the nail and a new seal is found.

- Buff** the remaining product with the **240-grit side of a Koala Buffer™** until the product is flush to the natural nail. Buff the surface of the remaining product with a **Boomerang Padded File**.



- Review** entire nail to be sure remaining product is thin and even, and that there is no lifted material left.

STEP 4:

P.R.E.P.

1. P - Perform a manicure.

- a. Apply a small amount of **CuticleAway™ Professional Cuticle Remover** evenly around the cuticle of each nail.*



- b. Gently slide a **cuticle pusher** along the nail plate toward the cuticle area and along the lateral folds to lift and loosen any non-living tissue from the nail plate. Remove any excess **CuticleAway™** from the nail and use a **curette** to remove non-living tissue up to the eponychium and lateral folds.



- c. **Scrub** nails thoroughly with soap and a damp brush, then rinse with warm water to remove the cuticle remover and soap; towel dry.*
- d. Use a **manicure nipper** to carefully remove any loosened, non-living tissue, as well as any loose pieces of skin or hangnails. Use a gentle touch during cuticle removal to protect the seals. Never cut living tissue as it can lead to infection.



2. **R - Remove** shine from the natural nail surface with the **240-grit side of the Koala Buffer™** in the direction of nail growth.



3. **E - Eliminate** surface contaminants and **P - Purify** nail plate layers.

- a. Thoroughly cleanse and temporarily dehydrate the nail plate layers with **SCRUBFRESH™** using a lint-free, plastic-backed pad. Gently pull lateral folds back and scrub thoroughly to be sure all areas of the nail are completely clean.



STEP 5:

Apply BRISA™ Bond

1. **Apply** one thin layer of **BRISA™ Bond** to the natural **nail plate** of 2-3 nails at a time ensuring that the brush has enough liquid to thoroughly and evenly cover each nail. Repeat this step until all nails are thoroughly and evenly coated.

Remember: When applying **BRISA™ Bond**, do not touch the skin or allow the product to flood the cuticle area.

2. Apply to five nails and cure each hand for **10 seconds (preset button 1)** in the **CND™ LED Lamp**. Do not remove the top film after removing the nails from the lamp.



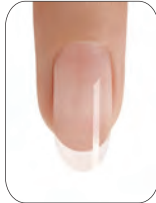
* Dry P.R.E.P. is an excellent option for clients with great natural nails, who do not build excessive cuticle between services. Eliminating the wet cuticle treatment can shorten the service time and increase adhesion for some clients.

STEP 6:

Create a Base Layer (optional)

This step will ensure proper adhesion and can prevent service breakdown. Implement when needed.

1. Apply a thin to medium layer of **BRISA™ Clear or Pure Pink - Sheer Sculpting Gel** to the natural nail.



2. Apply to **five nails** and **cure** each hand for **one minute (preset button 2B)** in the **CND™ LED Lamp**.* Do not remove the top film after removing the nails from the lamp.

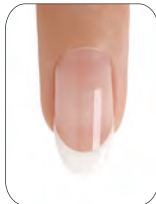


STEP 7:

Zone 1 - Smile Lines

*For a comprehensive tutorial of CND application techniques, see the **BRISA™ Gel Enhancements Sculpted on a Tip Step-by-Step**.*

1. **Re-establish smile line** with fresh product and reseal all edges.



2. Apply to **five nails** and **cure** each hand for **one minute (preset button 2B)** in the **CND™ LED Lamp**.* Do not remove the top film after removing the nails from the lamp.



STEP 8:

Zones 2 & 3 - Apex, Upper Arch and Cuticle Area

1. **Establish a new apex and upper arch** in Zone 2.



2. **Reseal lateral walls** with fresh product.

3. **Apply gel to Zone 3** leaving a tiny free margin along the sidewall and cuticle line. Then blend into Zone 3.

4. Apply to **five nails** and **cure** each hand for **one minute (preset button 2B)** in the **CND™ LED Lamp**.* Do not remove the top film after removing the nails from the lamp.

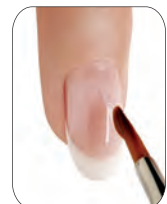


STEP 9:

Perfect the Shape (optional)

This step will reinforce the enhancement and can prevent service breakdown. Implement when needed.

1. Apply a thin layer of **BRISA™ Clear Sculpting Gel** over the entire nail to perfect the shape.



2. **Fill in low spots** if needed.

3. Apply to **five nails** and **cure** each hand for **one minute (preset button 2B)** in the **CND™ LED Lamp**.*



*If using the **CND™ UV Lamp**, cure for two minutes.

STEP 10:

Shape and Define

For a comprehensive tutorial of CND finishing techniques see the *Enhancement Finishing Step-by-Step*.

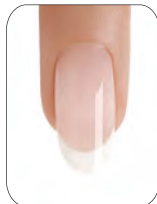
1. Remove the top film with **99% Isopropyl Alcohol** and a plastic-backed pad.
2. Finish the nail using a **Blizzard™ File** to define and shape.
3. Smooth the surface with a **Boomerang Padded File**, making sure to remove all shine.
4. Remove any dust with a disinfected brush and a plastic-backed pad saturated with **99% Isopropyl Alcohol**.



STEP 11:

Apply BRISA™ Gloss

1. Apply a thin layer of **BRISA™ Gloss** using the **CND 5 Point Polish Method** to the **extension edge** and **nail surface** of all five nails on one hand. (For more detailed information see the CND 5 Point Polish Method Step-by-Step.).
2. Apply to **five nails** and **cure** each hand for **one minute** (**preset button 3**) in the **CND™ LED Lamp**.*
3. Remove the top film with **99% Isopropyl Alcohol** and a plastic-backed pad.
4. Massage **SOLAROIL™ Nail & Cuticle Care** into the nails and skin.



*If using the **CND™ UV Lamp**, cure for two minutes.

PRODUCTS REQUIRED

COOLBLUE™ Hand Cleanser
OFFLY FAST™ Moisturizing Remover
CuticleAway™ Professional Cuticle Remover
SCRUBFRESH™ Nail Surface Cleanser
CND™ Files and Buffers
CND™ ProSeries Gel Flat Oval Brush #6
BRISA™ Bond
BRISA™ Paint
BRISA™ Sculpting Gels
BRISA™ Gloss
SOLAROIL™ Nail & Cuticle Care

ACCESSORIES/EQUIPMENT REQUIRED

CND™ LED Lamp
Hand towels
Hand soap
Plastic-backed, lint-free pads
Disinfectable dust brush*
99% Isopropyl Alcohol
Cuticle pusher
Manicure nippers
Nail clippers
Curette
*Optional