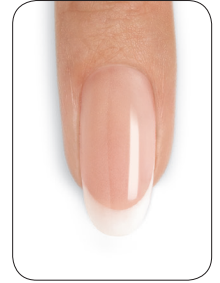


# Liquid & Powder Enhancements Sculpted on a Tip



90 MIN

A service designed for problem nails with no natural nail extension edge, requiring length and re-design.

## STEP 1:

## P.R.E.P.

### 1. P - Perform a manicure.

- a. Have the client wash their hands with soap and water and towel dry.



- b. Massage **COOLBLUE™** Hand Cleanser into the client's hands to cleanse skin.

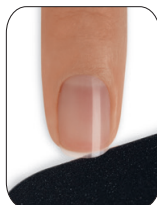


- c. Remove any existing nail color from the natural nail using an acetone-based polish remover (**OFFLY FAST™** Moisturizing Remover or **SCRUBFRESH™** Nail Surface Cleanser) and a plastic-backed lint-free pad.

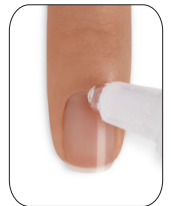


- d. If necessary, trim the length from each nail, using nail clippers.

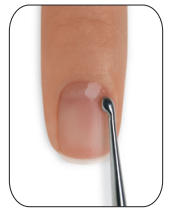
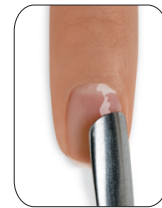
- e. Shape the extension edge of each nail with the **240-grit side of a Kanga™ File or Koala Buffer™**.



- f. Apply a small amount of **CuticleAway™ Professional Cuticle Remover** evenly around the cuticle of each nail.\*

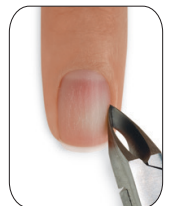


- g. Gently slide a **cuticle pusher** along the nail plate toward the cuticle area and along the lateral folds to lift and loosen any non-living tissue from the nail plate. Remove any excess **CuticleAway™** from the nail and use a **curette** to remove non-living tissue up to the eponychium and lateral folds.



- h. **Scrub** nails thoroughly with soap and a damp brush, then rinse with warm water to remove the cuticle remover and soap; towel dry.\*

- i. Use a **manicure nipper** to carefully remove any loosened, non-living tissue, as well as any loose pieces of skin or hangnails. Use a gentle touch during cuticle removal to protect the seals. Never cut living tissue as it can lead to infection.



\* Dry P.R.E.P. is an excellent option for clients with great natural nails, who do not build excessive cuticle between services. Eliminating the wet cuticle treatment can shorten the service time and increase adhesion for some clients.

2. **R - Remove** shine from the natural nail surface with the **240-grit side of the Koala Buffer™** in the direction of nail growth.



*NOTE: When applying a tip, Eliminate and Purify nail plate layers using SCRUBFRESH™ AFTER tip application.*

**STEP 2:**

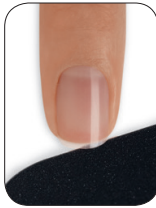
## Apply a Tip

### 1. Fit The Tip

- a. **Match** - The correct tip to the C-curve of the natural nail.



- b. **Fit** - The tip should fit easily from lateral wall to lateral wall of the natural nail and should encase the natural nail extension edge exactly. Use a **Kanga™ File** to shape and refine the natural nail to fit the tip perfectly into the stop point of the contact area. Do not use **SCRUBFRESH™** on the nail until after tip application.



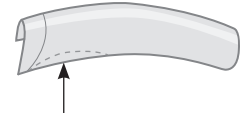
### 2. Pre-Tailor The Tip

- a. **Contact area** - The contact area of the tip should cover no more than 1/3 of the natural nail before application. This will facilitate fast, efficient application and blending as well as optimum contact of the Liquid & Powder to the natural nail.



To reduce the contact area, gently file away unwanted material using a **180-grit file**. File contact area at a 45° angle to gradually form a "C" shape similar to the stop point. Bevel and taper to a thin edge. You may also choose to use a one-step cutter or curved cuticle scissors to cut the contact area away.

- b. **Lateral Wall** - If there is any overhang along the lateral wall of the tip (and you feel you can't use a smaller size, or if the nail is bitten and has excess skin on the sidewalls) use a file or sharp, curved cuticle scissors and carve out an arch to allow the tip to fit snugly along the sidewall, making sure the tip does not press into the skin. Work only on the area of overhang; do not remove other areas of the sidewall. Isolate the problem area, and alter only in that area. Buff the tip to bevel and smooth all edges. This will reduce the amount of blending once the tip is adhered.



### 3. Apply The Tip

- a. **Place a bead of adhesive** in the contact area of the tip and distribute evenly, being particularly careful to coat the corners. Place a small line of adhesive on the natural nail plate extension edge. Hold the tip between the thumb and forefinger when applying adhesive.



- b. **Spread the adhesive** gently with the tip to completely coat the entire extension edge. Use one or two quick wiping strokes to do this. Be particularly careful to coat the corners of the natural nail and the sidewall of the contact area with adhesive.

- c. **Secure** the tip by holding it at a 45° angle and gently butt the stop point against the natural nail extension edge. Slowly lower the contact area down to the natural nail, stopping when the desired side arch is achieved, while pressing all bubbles out.



- d. **Press firmly** against the extension edge for 10 seconds, securing the stop point to the natural nail.

- e. **Remove** any residual adhesive with a lint-free, plastic-backed pad.

#### 4. Cut The Tip

- a. Use a “one-cut” tip cutter or wide-blade curved cuticle scissors or clippers to cut the tip to desired length and shape.

#### 5. Shape And Blend The Tip

- a. **Shape** the extension edge of the tip with a **180-grit file**, **Hot Shot™ File** or **Blizzard™ File**, to create the desired shape.



- b. **Thin** the entire tip evenly using a **180-grit file**, paying close attention to the corners of the tip.



- c. **Refine** Zone 1 and thin to a sharp edge by beveling from the center of the tip toward the extension edge using a one-directional stroke.



- d. **Refine** and bevel sidewalls using a **180-grit file**. Bevel evenly down each side of the nail, working from the center of the tip down towards the sidewalls to prevent a wide look in Zone 2.



- e. **Refine** Zone 2 using a **180-grit file**. Thin the contact area of the tip and gently blend the remaining tip material from the nail using the **240-grit side of the Koala Buffer™** to prevent ghost shadowing and pocket lifting. Be sure the tip is thin, blended and translucent.



- f. **Remove** any excess dust with a disinfectable dust brush.



#### STEP 3:

### P.R.E.P.

1. **E - Eliminate** surface contaminants and **P - Purify** nail plate layers.

- a. Avoiding contact with the tip, thoroughly cleanse and temporarily dehydrate the nail plate layers with **SCRUBFRESH™** using a lint-free, plastic-backed pad. Gently pull lateral folds back and scrub thoroughly to be sure all areas of the nail are completely clean.



#### STEP 4:

### Zone 1 - Smile Lines

1. Place a **bead** of white sculpting powder in **Zone 1 near the extension edge**.



2. Next, **press the bead up one side into the corner** to begin establishing the depth of the smile line. Use small controlled presses and a smooth, fluid motion.



3. Finish the smile line by **pressing to the opposite side** and into the corner. Smooth the entire Zone to ensure an even surface.

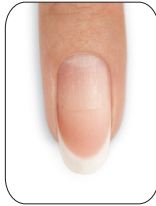


4. **If needed**, wipe out excess liquid from the brush. Then, using the flattened flags of the brush, detail the smile line starting from the center and working towards the corners of the smile line.

### STEP 5:

## Zone 2 - Apex and Upper Arch

1. Place a **bead** of pink sculpting powder **in the middle of Zone 2**.
2. **Press product from side to side**, concentrating on making complete contact with the nail plate. **Keep the bulk of the product at the apex** and taper to the sidewalls forming a thin edge, without touching the skin. Lightly feather any remaining product to Zone 1.

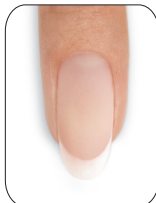


Zone 2 should be the **thickest part of the enhancement**, protecting the stress area, where nails most often break. The highest point of the arch, called the apex, should be placed directly between the cuticle line and the extension edge for proper balance and beauty. From the apex, the product should taper to a thin edge in all directions.

### STEP 6:

## Zone 3 - Cuticle Area

1. Place a **bead** of a sheer pink or clear sculpting powder **in the middle of Zone 3** to complete the upper arch. Press from side to side until the entire area is covered, leaving a tiny free margin all the way around the sidewalls and cuticle area.
2. **Check** the enhancement for clean, continuous lines on both the upper and lower arch. Add product where necessary. Remember to use the highlight on the nail to look for high and low spots in the product.



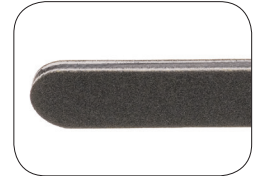
A **thin application in Zone 3** will produce natural-looking, long-lasting enhancements, as well as help prevent lifting.

### STEP 7:

## Shape and Define

For a comprehensive tutorial of CND finishing techniques see the *Enhancement Finishing Step-by-Step*.

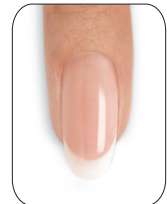
1. **Refine** the extension edge and sidewalls using the **240-grit Kanga™ File**.
2. Shape and define the nail using the **180-grit side of the Hot Shot™ File**, followed by the **Boomerang Padded File**.



### STEP 8:

## Bring to a High Shine

1. Smooth the surface using the **240-grit side of the Koala Buffer™**.
2. Apply a drop of **SOLAROIL™** Nail & Cuticle Care to each nail and buff with the **1200-grit side of a Koala Buffer™** for scratch refinement. Rub any remaining oil into the nail and surrounding soft tissue.
3. Finish nails to a high-gloss shine with the **Girlfriend™ Buffer, Glossing Buffer** or **Glossing Block**.



**As an alternative**, skip the **SOLAROIL™** application above and buff with the **180-grit Boomerang Padded File**. Remove any dust with a



disinfectable brush and a plastic-backed pad saturated with **99% Isopropyl Alcohol**. Apply **BRISA™ Gloss** and cure for one minute (**preset button 3**) in the **CND™ LED Lamp\***. Then remove the top film with **99% Isopropyl Alcohol**. Apply a drop of **SOLAROIL™** to each nail.

\*If using the **CND™ UV Lamp**, cure for two minutes.

## **PRODUCTS REQUIRED**

**COOLBLUE™** Hand Cleanser  
**OFFLY FAST™** Moisturizing Remover  
CuticleAway™ Professional Cuticle Remover  
**SCRUBFRESH™** Nail Surface Cleanser  
**RETENTION+™** or **RADICAL SOLARNAIL™**  
Sculpting Liquids  
Perfect Color or **RETENTION+™**  
Sculpting Powders  
**CND™** Files and Buffers  
**CND™** Tips  
**CND™** Adhesive  
**CND™** ProSeries Liquid & Powder Brush  
**BRISA™** Gloss\*  
**SOLAROIL™** Nail & Cuticle Care

\*Optional

## **ACCESSORIES/EQUIPMENT REQUIRED**

Hand towels  
Hand soap  
Plastic-backed, lint-free pads  
Disinfectable dust brush\*  
99% Isopropyl Alcohol\*  
Cuticle pusher  
Manicure nippers  
Nail clippers  
Curved cuticle scissors\*  
Curette  
Dappen dish  
**CND™** LED Lamp\*

\*Optional