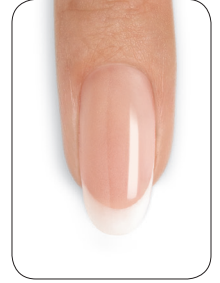


Liquid & Powder Enhancements Rebalancing



1 HOUR Rebalancing is a method of maintaining the balance and beauty of the enhancement while the natural nail grows. Proper rebalancing protects the health of the natural nail and maintains the longevity of the service.

STEP 1:

Cleanse Hands

1. Have the client wash their hands with soap and water and towel dry.
2. Massage **COOLBLUE™** Hand Cleanser into the client's hands to cleanse skin.



STEP 2:

Assess for a Rebalance

1. Remove any existing nail color from the natural nail using an acetone-based polish remover (**OFFLY FAST™** Moisturizing Remover or **SCRUBFRESH™** Nail Surface Cleanser) and a plastic-backed lint-free pad.
2. **Assess each nail** for potential problems.



a. There are **three types** of rebalance:

- **Problem-free rebalance**
When using a single-color, if the nail comes back problem free, re-establish the original length and reduce the product to a thin layer and apply product to re-engineer the enhancement's structural integrity.
- **Forever French rebalance**
Forever French enhancements that come back problem free need to be thinned out by 50% in all three Zones. Then apply product to re-establish the smile line and re-engineer the original structural design.
- **Diagnostic rebalance**
This process includes thinning and beveling each Zone where problems exist, then replacing the product to prevent future breakdown. The goal here is to fix the problem and then reassess a long-term solution.

STEP 3:

Prep for Rebalance

File prep each Zone for correction and prevention of future problems. **Avoid nipping** or mechanical force – sliding the nipper under a lifted edge and pulling up can lead to service breakdown. It can also pull up layers of the nail plate, which will weaken the foundation of the enhancement. Nipping can lead to onycholysis, and perpetuate excessive filing to remove the ridge left behind.

1. Zone 1 – File Prep

- Re-establish the original length of the extension edge with a **180-grit file** (or higher). Use a **240-grit file** when there is natural nail under the enhancement at the extension edge to prevent damage to the natural nail plate.

- Use a **120-grit file** (or higher) to thin out the entire Zone 1. If the natural nail is separating from the product, file around the area of lift, until the loosened material flakes away from the natural nail without causing damage. Blend the lifted area with a **240-grit file** until a new seal is found between the product and nail.



- Keep the **file parallel** to the nail and work in rounded motions to evenly thin out the coating.

- Bevel** to expose a small margin of keratin all the way around the extension edge and around lateral walls to reseal during product reapplication. This will help prevent the natural nail from pulling away from the overlay.



Bevel Down From Center To Tip Until Lift Is Removed

2. Zone 2 – File Prep

- Thin out** the entire Zone 2 and taper the lateral walls.



- Prep all cracks** for repair by thinning the area around the crack. Thin all the way to the root of the crack (which is usually down to the natural nail plate). If the crack is small, file off product in the shape of a “V” to expose the crack in the natural nail.
- Thin** any area of “pocket lift” until the separated product flakes away and a new seal is found.
- Thin and taper** lateral walls until flush to the natural nail.
- Blend** Zone 2 into Zone 1.

3. Zone 3 – File Prep

- Thin** the entire Zone 3 and blend to Zone 2.



- Thin** areas of lift until the separated product flakes away from the nail and a new seal is found.

- Buff** the remaining product with the **240-grit side of a Koala Buffer™** until the product is flush to the natural nail.



- Review** entire nail to be sure remaining product is thin and even, and that there is no lifted material left.

STEP 4:

P.R.E.P.

1. P - Perform a manicure.

- a. Apply a small amount of **CuticleAway™ Professional Cuticle Remover** evenly around the cuticle of each nail.*



- b. Gently slide a **cuticle pusher** along the nail plate toward the cuticle area and along the lateral folds to lift and loosen any non-living tissue from the nail plate. Remove any excess **CuticleAway™** from the nail and use a **urette** to remove non-living tissue up to the eponychium and lateral folds.



- c. **Scrub** nails thoroughly with soap and a damp brush, then rinse with warm water to remove the cuticle remover and soap; towel dry.*

- d. Use a **manicure nipper** to carefully remove any loosened, non-living tissue, as well as any loose pieces of skin or hangnails. Use a gentle touch during cuticle removal to protect the seals. Never cut living tissue as it can lead to infection.



2. **R - Remove** shine from the natural nail surface with the **240-grit side of the Koala Buffer™** in the direction of nail growth.



3. **E - Eliminate** surface contaminants and **P - Purify** nail plate layers.

- a. Thoroughly cleanse and temporarily dehydrate the nail plate layers with **SCRUBFRESH™** using a lint-free, plastic-backed pad. Gently pull lateral folds back and scrub thoroughly to be sure all areas of the nail are completely clean.

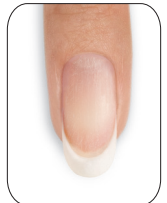


STEP 5:

Zone 1 - Smile Lines

For a comprehensive tutorial of CND application techniques see the Liquid & Powder Enhancements Sculpted on a Tip Step-by-Step.

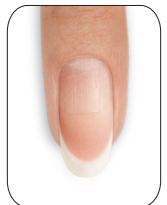
1. **Re-establish smile line** with fresh product and reseal all edges.



STEP 6:

Zones 2 & 3 - Apex, Upper Arch and Cuticle Area

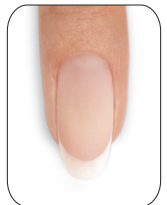
1. **Repair cracks** by applying a small bead into prepared area. Reinforce stress points.



2. **Establish a new apex and upper arch** in Zone 2.

- a. **Reseal** lateral walls with fresh product.

- a. Apply product to **Zone 3** leaving a tiny free margin along the sidewall and cuticle line. Then blend remaining product into Zone 2.



* Dry P.R.E.P. is an excellent option for clients with great natural nails, who do not build excessive cuticle between services. Eliminating the wet cuticle treatment can shorten the service time and increase adhesion for some clients.

STEP 7:

Shape and Define

For a comprehensive tutorial of CND finishing techniques see the *Enhancement Finishing Step-by-Step*.

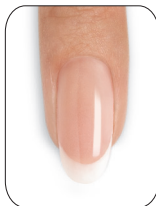
1. Refine the extension edge and sidewalls using the **240-grit Kanga™ File**.
2. Shape and define the nail using the **180-grit side of the Hot Shot™ File** followed by the **Boomerang Padded File**.



STEP 8:

Bring to a High Shine

1. Smooth the surface using the **240-grit side of the Koala Buffer™**.
2. Apply a drop of **SOLAROIL™ Nail & Cuticle Care** to each nail and buff with the **1200-grit side of a Koala Buffer™** for scratch refinement. Rub any remaining oil into the nail and surrounding soft tissue.
3. Finish nails to a high-gloss shine with the **Girlfriend™ Buffer, Glossing Buffer** or **Glossing Block**.



As an alternative, skip the **SOLAROIL™** application above and buff with the **180-grit Boomerang Padded File**. Remove any dust with a disinfectable brush and a plastic-backed pad saturated with **99% Isopropyl Alcohol**. Apply **BRISA™ Gloss** and cure for one minute (**preset button 3**) in the **CND™ LED Lamp***. Then remove the top film with **99% Isopropyl Alcohol**. Apply a drop of **SOLAROIL™** to each nail.



PRODUCTS REQUIRED

COOLBLUE™ Hand Cleanser
OFFLY FAST™ Moisturizing Remover
CuticleAway™ Professional Cuticle Remover
SCRUBFRESH™ Nail Surface Cleanser
RETENTION+™ or **RADICAL SOLARNAIL™** Sculpting Liquids
Perfect Color or **RETENTION+™** Sculpting Powders
CND™ Files and Buffers
CND™ ProSeries Liquid & Powder Brush
BRISA™ Gloss*
99% Isopropyl Alcohol
SOLAROIL™ Nail & Cuticle Care

ACCESSORIES/EQUIPMENT REQUIRED

Hand towels
Hand soap
Plastic-backed, lint-free pads
Disinfectable dust brush*
Cuticle pusher
Manicure nippers
Nail clippers
Curette
Dappen dish
CND LED Lamp*

*Optional

**If using the CND™ UV Lamp, cure for two minutes.*